



Say hello to
APEX CANOPY

THE NEWEST ADDITION TO THE
POPULAR APEX COLLECTION



Your next workspace upgrade

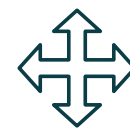
Apex Canopy is designed for breakout environments where people gather to share ideas, recharge or work side by side.

The Apex Canopy has been redesigned with a stronger frame and a contemporary form that feels open while still providing a sense of place.

The lines are cleaner, the presence is lighter, and the experience around the table feels intentional rather than improvised.



APEX CANOPY MOVE IN WHITE OAK AND ANODIC BRONZE



All-new Move option

Need to shift your Apex Canopy with ease?

Our new **Move** feature lets you add modern, durable castors to the base so you can reconfigure your space whenever inspiration strikes.

Four strong castor wheels allow the Apex Canopy to be adapted for events, collaboration or simply a change of scene.

Move gives you the freedom to do it your way with **no heavy lifting required**.



One Bolt System™

Our innovative **One Bolt System™** makes assembly straightforward and hassle-free with just one type of standard bolt.

Designed for simplicity, a standard bolt is used throughout the entire build, ensuring faster, easier assembly without compromising on strength.

Fewer parts, fewer steps, less time spent building and more time making use of the space.



Tailored to you

Apex Canopy is built to adapt to the purpose of any breakout space.

It comes in three overall configurations, plus the new **Move** option for dynamic environments where layouts shift through the day.

The top trays are available in four patterns to shape the visual character overhead, and both the MFC top and metalwork finishes offer a wide palette to align with brand tone or style.

Three distinctive configurations

Apex Canopy is defined by its striking silhouette, available in three distinctive configurations. The steel frame is designed to define space with confidence, offering lasting durability while maintaining the clean, open feel that dictates the Apex collection's signature style. Desk and Poseur heights can also be specified with the **Move** option for fluid, adaptable environments.



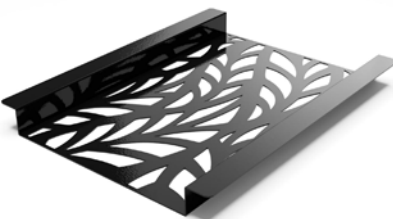
Apex Canopy Desk Height



Apex Canopy Poseur Height



Apex Canopy Split-Level

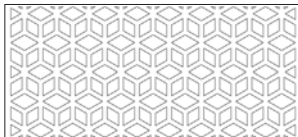


Customisable top trays

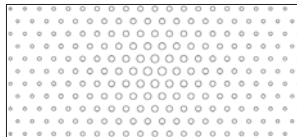
We offer four laser-cut steel top tray designs so teams can shape the look and feel of their breakout space. Each pattern creates a distinct visual character, allowing designers and users to choose an Apex Canopy style that aligns with brand personality, atmosphere and intended use.



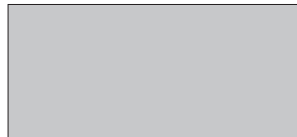
Leaf



Geo



Dot



Solid

FEATURES & BENEFITS

- Option to add our new **Move** feature on Desk and Poseur table sizes up to 2500mm
- Simplified assembly with our innovative **One Bolt System™**
- Four top tray pattern options for customisability
- Reversible and multifunctional cable tray
- Improved frame stability with redeveloped supporting beams
- Metal-to-metal fittings with no wood screws
- New option to upgrade to premium **FENIX®** tops on all configurations
- Desk and Poseur tables now available in a wider range of sizes - 1600-5000mm



Hawk Furniture Ltd

Factory and HQ • Hawk Landings, Skiff Lane, Holme Upon Spalding Moor, York, YO43 4BB
London Showroom • 99 St John Street, Clerkenwell, London, EC1M 4AS
01430 861229 • hawkfurniture.co.uk • enquiries@hawkfurniture.co.uk